

SITE DESCRIPTION

THIS SITE IS LOCATED ON LOT-1 IN CHATHAM HOMES SUBDIVISION IN LIBERTY COUNTY, GA. THE LOT HAS A TOTAL ACREAGE OF 0.31 ACRES. EXISTING VEGETATION IS MATURE PINES AND OAKS. THE PLAN PROPOSES A DISTURBED ACREAGE OF .31 ACRES.

SOIL CONDITIONS

Oc-OcILLA LOAMY FINE SAND.

PER THE SOIL SURVEY OF LIBERTY COUNTY, GEORGIA, PUBLISHED BY THE U.S. DEPARTMENT OF AGRICULTURE/ NATURAL RESOURCES CONSERVATION SERVICE.

SILT STORAGE CALCULATIONS

SILT FENCE REQUIRED = (100FT/0.25 AC)(0.31 AC) = 124'
 SILT FENCE SHOWN ON PLAN = 341'
 ESTIMATED EROSION = 0.31 AC X 67 CY/AC = 20.77 CY STORAGE CAPACITY REQUIRED.
 341' LF TYPE-S SILT FENCE @ 0.17 CY/FT = 57.97 CY STORAGE CAPACITY PROVIDED

PRECONSTRUCTION RUNOFF = 2.16 CFS
 POST DEVELOPMENT RUNOFF = 2.53 CFS

LANDSCAPE NOTE

FOR PERMANENT VEGETATION: SEE LANDSCAPE PLAN

EROSION CONTROL STATEMENTS

"EROSION CONTROL MEASURES WILL BE MAINTAINED AT ALL TIMES. IF FULL IMPLEMENTATION OF THE APPROVED PLAN DOES NOT PROVIDE FOR EFFECTIVE EROSION CONTROL, ADDITIONAL EROSION AND SEDIMENT CONTROL MEASURES SHALL BE IMPLEMENTED TO CONTROL OR TREAT THE SEDIMENT SOURCE."

"THE ESCAPE OF SEDIMENT FROM THE SITE SHALL BE PREVENTED BY THE INSTALLATION OF EROSION CONTROL MEASURES AND PRACTICES PRIOR TO, OR CONCURRENT WITH, LAND-DISTURBING ACTIVITIES."

"MULCH OR TEMPORARY GRASSING SHALL BE APPLIED TO ALL EXPOSED AREAS WITHIN 14 DAYS OF DISTURBANCE. IF AN AREA REMAINS UNDISTURBED FOR GREATER THAN SIX MONTHS, PERMANENT VEGETATIVE TECHNIQUES SHALL BE EMPLOYED."

SEQUENCE OF MAJOR ACTIVITIES

1. INSTALL STABILIZED CONSTRUCTION ENTRANCE.
2. CLEAR AND GRUB AREAS REQUIRED FOR INSTALLATION OF EROSION AND SEDIMENT CONTROL STRUCTURES.
3. INSTALL SEDIMENT AND EROSION CONTROL STRUCTURES.
4. COMPLETE CLEARING AND GRUBBING.
5. STOCKPILE TOPSOIL.
6. STABILIZED CLEARED AND STOCKPILE AREAS WITHIN 14 DAYS.
7. INSTALL BUILDING FOUNDATION.
8. COMPLETE ROUGH GRADING.
9. PLACE DRIVEWAY GRAVEL BASE.
10. CONSTRUCT BUILDING.
11. INSTALL UTILITIES AND SEPTIC TANK.
12. COMPLETE GRADING.
13. INSTALL DRIVEWAY AND OTHER PAVEMENT.
14. PERMANENT SEEDING AND LANDSCAPING.
15. REMOVE SEDIMENT AND EROSION CONTROL STRUCTURES.
16. WHEN ALL CONSTRUCTION ACTIVITY IS COMPLETE REMOVE REMAINING EAS FACILITIES AND SEED DISTURBED AREAS.

Ds1 DISTURBED AREA STABILIZATION (W/MULCHING ONLY)

SPECIFICATIONS

A. For temporary protection of critical areas without seeding. This standard applies to grades or cleared areas which may be subjected to erosion for 6 months or less, where seeding may not have suitable growing season to produce an erosion retardant cover, but which can be stabilized with a mulch cover.

Site Preparation

1. Grade, as needed and feasible, to permit the use of equipment for applying and anchoring mulch.
2. Install needed erosion control measures as required such as dikes, diversions, berms, terraces and sediment barriers.
3. As needed and feasible, loosen compact soil to a minimum depth of 3 inches.

Mulching Materials

1. Dry straw or hay - spread at a rate of 2 1/2 tons per acre
2. Wood waste, chips, sawdust or bark - spread 2 to 3 inches deep (about 6 to 9 tons per acre).
3. Erosion control matting or netting, such as excelsior, jute, textile and plastic matting and netting - applied in accordance with manufacturers recommendations.
4. Cutback asphalt, slow curing - applied at 1200 gallons per acre (or 1/4 gallon per sq. yd.)
5. Polyethylene film - secured over banks or stockpiled soil material for temporary protection.

Applying and Anchoring Mulch

1. Apply straw or hay mulch uniformly by hand or mechanically. Anchor as appropriate and feasible. It may be pressed into the soil with a disk harrow with the disk set straight or with a special "pucker disk." The disk may be smooth or serrated and should be 20 inches or more in diameter and 8 to 12 inches apart. The edges of the disk should be dull enough not to cut the mulch but press it into the soil leaving much of it in an erect position. Straw hay mulch spread with special blower-type equipment may be anchored with emulsified asphalt (Grade AE-5 or SS-1). The asphalt emulsion must be sprayed onto the mulch as it is ejected from the machine. Use 100 gallons of water per acre.
2. Spread wood waste uniformly on slopes that are 3:1 and flatter. No anchoring is needed.
3. Commercial matting and netting. Follow manufacturer's specification included with the material.
4. Apply asphalt so area has uniform appearance. (Note: Use in areas of pedestrian traffic could cause problems or "tracking in" or damage to shoes, clothing, etc.)

B. To conserve moisture and control weeds in nurseries, ornamental beds, ground shrubs, and on bar areas on lawns.

Mulching Materials

Use one of the materials given below and apply at thickness indicated.

Material	Depth
1. Grain straw or grass hay	6" to 10"
2. Pine needle	4" to 6"
3. Wood waste (sawdust, bark, chips)	4" to 8"
4. Shredded residues (crops, leaves, etc.)	4" to 8"

Completely cover area with black polyethylene film and hold in place by placing soil on the outer edge. When using organic mulches, apply 20-30 pounds of nitrogen in addition to the normal amount needed for plant growth to offset the tie up of N by decomposition of mulch

Ds2 SPECIES AND PLANTING SCHEDULE

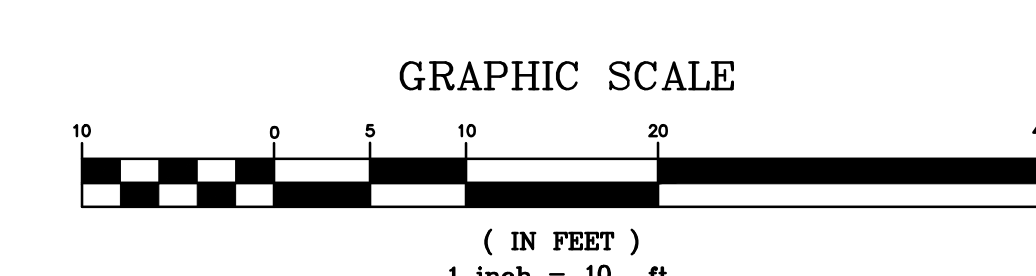
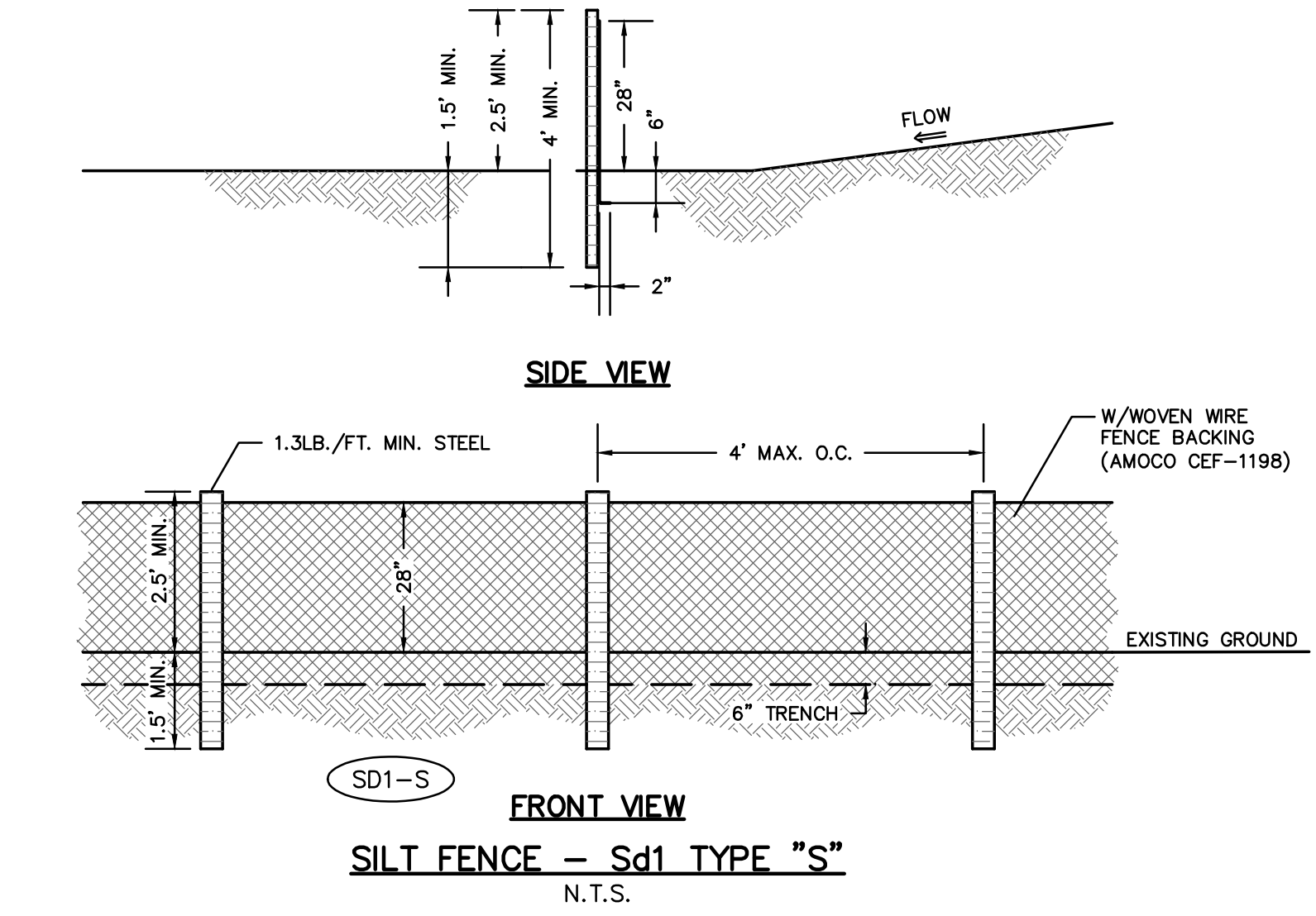
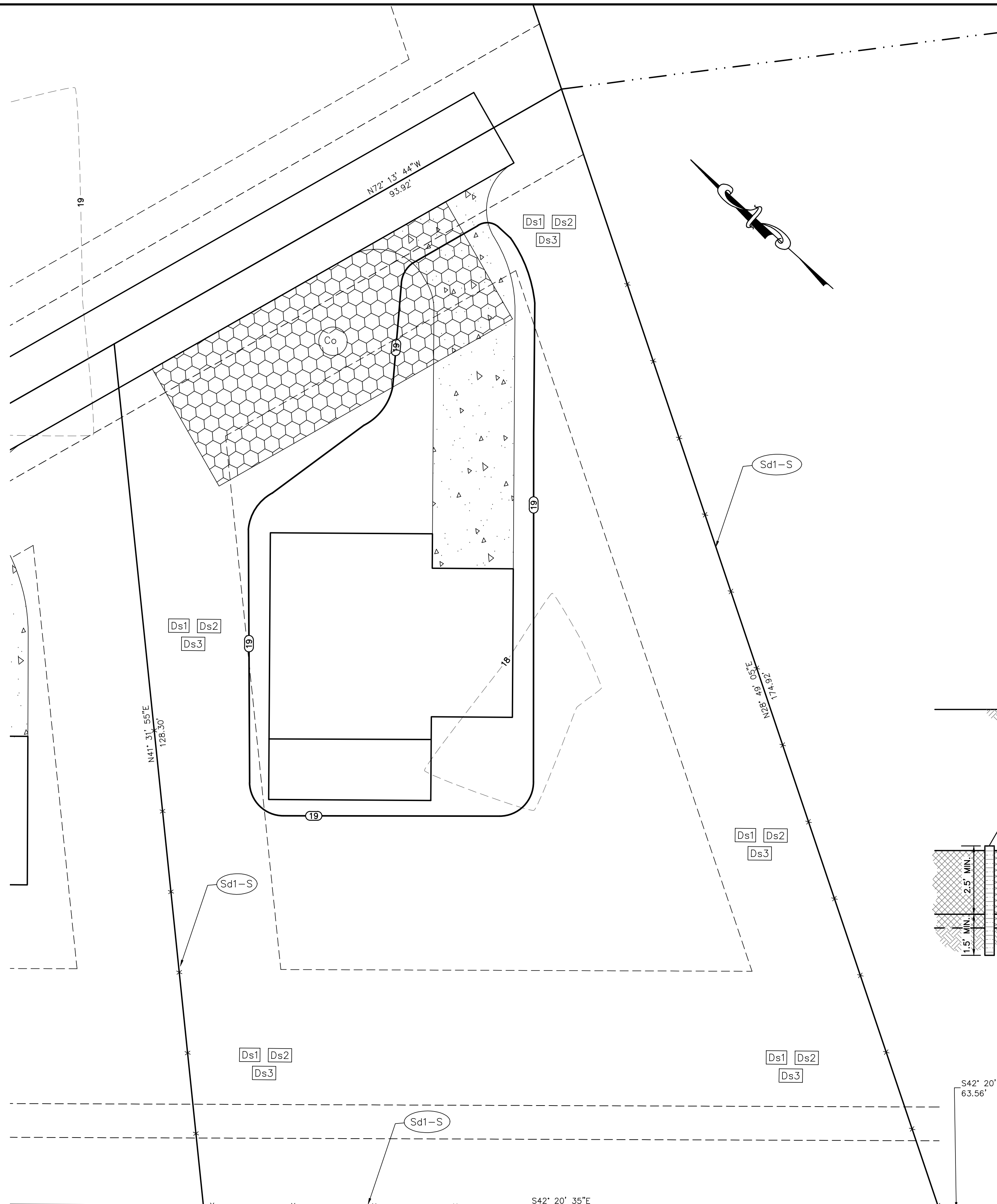
SPECIES	BROADCAST RATES 1/ - PLS 2/ PER ACRE 1000 S.F.		PLANTING DATES BY RESOURCE		REMARKS
	RATES 1/ - PLS 2/ PER ACRE 1000 S.F.	RESOURCE AREA 3/	AREAS *		
RYEGRASS, ANNUAL ALONE	40 lbs. 0.9 lb.	M-L P-C	J F M A M J J A S O N D		227,000 SEED PER POUND. DENSE COVER. VERY COMPETITIVE AND IS NOT TO BE USED IN MIXTURES.

* (DARK LINES REPRESENT OPTIMUM DATES, GRAY LINES INDICATE PERMISSIBLE BUT MARGINAL DATES.)

Ds3 SPECIES AND PLANTING SCHEDULE

SPECIES	BROADCAST RATES 1/ - PLS 2/ PER ACRE 1000 S.F.		PLANTING DATES BY RESOURCE		SPECIFICATIONS
	RATES 1/ - PLS 2/ PER ACRE 1000 S.F.	RESOURCE AREA 3/	AREAS *		
BERMUDA, COMMON (CYNODON DACTYLON) HALLED SEED ALONE WITH OTHER PERENNIALS	10 LBS. 0.2 LB. 6 LBS. 0.1 LB.		P	J F M A M J J A S O N D	1,787,000 SEED PER POUND. QUICK COVER. LOW GROWING AND SOO FORMING. FULL SUN. GOOD FOR ATHLETIC FIELDS.
BERMUDA, COMMON (CYNODON DACTYLON) UNHALLED SEED WITH TEMPORARY COVER WITH OTHER PERENNIALS	10 LBS. 0.2 LB. 6 LBS. 0.1 LB.		P	J F M A M J J A S O N D	PLANT WITH WINTER ANNUALS. PLANT WITH TALL FESCUE.
BERMUDA SPRIGS (CYNODON DACTYLON) COASTAL COMMON, MIDLAND, OR TIF 44 COASTAL COMMON, OR TIF 44	40 CU. FT. 0.9 CU.FT. OR SOO PLUGS 3' x 3'		P	J F M A M J J A S O N D	A CUBIC FT. CONTAINS APPROXIMATELY 650 SPRIGS. A BUSHEL CONTAINS 1.25 C.F. OR APPROXIMATELY 800 SPRIGS.

- (1) BROADCAST RATES ARE IN PURE LIVE SEED (PLS)
- (2) M-L REPRESENTS THE MOUNTAIN, BLUE RIDGE, AND RIDGES AND VALLEYS MURA P REPRESENTS THE SOUTHERN PEDIMENT MURA C REPRESENTS SOUTHERN COASTAL PLAIN, SAND HILLS, BLACK LANDS, AND ATLANTIC COAST FLATWOODS MURA'S
- (3) DARK LINES INDICATE OPTIMUM DATES, GRAY LINES INDICATE PERMISSIBLE BUT MARGINAL DATES.



TERTIARY PERMITTEE REQUIREMENTS:

A. INSPECTIONS - DAILY, WEEKLY AND MONTHLY

ALL INSPECTIONS MUST BE CONDUCTED BY A CERTIFIED PERSON PROVIDED BY THE TERTIARY PERMITTEE UNTIL THE NOT IS SUBMITTED TO EPD.

DAILY - FOR EACH DAY A CONSTRUCTION ACTIVITY TAKES PLACE AT THE SITE:

- ALL AREAS WHERE PETROLEUM PRODUCTS ARE STORED, USED, OR HANDLED FOR SPILLS AND LEAKS FROM VEHICLES AND EQUIPMENT
- ALL AREAS WHERE VEHICLES ENTER OR EXIT SITE FOR EVIDENCE OF OFF-SITE TRACKING
- DAILY RAINFALL INFORMATION COLLECTED IN ACCORDANCE WITH PERMIT

WEEKLY - ONCE EVERY SEVEN CALENDAR DAYS AND WITHIN 24 HRS OF A STORM THAT IS 0.5 INCHES OF RAINFALL OR GREATER (UNLESS SUCH STORM ENDS AFTER 5:00 PM ON ANY FRIDAY OR NON-WORKING SATURDAY, NON-WORKING SUNDAY OR ANY NON-WORKING FEDERAL HOLIDAY IN WHICH CASE THE INSPECTION SHALL BE COMPLETED BY THE END OF THE NEXT BUSINESS DAY/AND OR WORKING DAY):

- DISTURBED AREAS OF THE CONSTRUCTION SITE THAT HAVE NOT UNDERGONE FINAL STABILIZATION
- AREAS USED FOR STORAGE OF MATERIALS THAT ARE EXPOSED TO PRECIPITATION THAT HAVE NOT UNDERGONE FINAL STABILIZATION
- STRUCTURAL CONTROL MEASURES
- MONTHLY - AT LEAST ONCE PER MONTH DURING THE TERM OF THE PERMIT THE AREAS OF THE SITE THAT HAVE UNDERGONE FINAL STABILIZATION:
- THESE AREAS SHALL BE INSPECTED FOR EVIDENCE OF, OR POTENTIAL FOR, POLLUTANTS ENTERING THE DRAINAGE SYSTEM AND THE RECEIVING WATER(S)
- EROSION AND SEDIMENT CONTROL MEASURES IDENTIFIED IN THE PLAN SHALL BE OBSERVED TO ENSURE THAT THEY ARE OPERATING CORRECTLY.

DEFICIENCIES MUST BE CORRECTED AS SOON AS POSSIBLE AND CORRECTIVE ACTIONS DOCUMENTED. IF CORRECTIVE ACTION REQUIRES REVISIONS TO THE ES&PC PLAN, THE PLAN MUST BE REVISED WITHIN 7 CALENDAR DAYS OF THE INSPECTION AND REVISIONS MUST BE IMPLEMENTED WITHIN 7 CALENDAR DAYS OF THE INSPECTION.

B. SAMPLING

SAMPLING REQUIREMENTS ARE ONLY APPLICABLE TO LOT(S) WITH A PLANNED DISTURBANCE EQUAL TO OR GREATER THAN 5 ACRES.

C. RETENTION OF RECORDS

THE TERTIARY PERMITTEE MUST RETAIN THE FOLLOWING RECORDS AT THE CONSTRUCTION SITE OR READILY AVAILABLE AT A DESIGNATED LOCATION FROM THE BEGINNING OF THE PROJECT UNTIL A NOT HAS BEEN FILED:

- A COPY OF THE TERTIARY NOI(S) SUBMITTED TO EPD
- A COPY OF THE ES&PC PLAN
- THE DESIGN PROFESSIONAL'S REPORT OF THE RESULTS OF THE INSPECTION CONDUCTED IN ACCORDANCE WITH THE PERMIT
- A COPY OF ALL MONITORING INFORMATION, RESULTS AND REPORTS REQUIRED BY THIS PERMIT (IF APPLICABLE)
- A COPY OF ALL INSPECTION REPORTS GENERATED IN ACCORDANCE WITH THE PERMIT
- A COPY OF ALL VIOLATION SUMMARIES AND VIOLATION SUMMARY REPORTS GENERATED IN ACCORDANCE WITH PERMIT.
- DAILY RAINFALL INFORMATION COLLECTED IN ACCORDANCE WITH PERMIT.

D. FILING THE NOTICE OF TERMINATION (NOT)

ONCE THE PROJECT HAS BEEN COMPLETED, THE TERTIARY PERMITTEE IS REQUIRED TO NOTIFY EPD BY SUBMITTING AN NOT VIA CERTIFIED RECEIPT MAIL TO THE LOCAL EPD DISTRICT OFFICE. A COPY OF THE NOT SHOULD BE SUBMITTED TO THE LIA, IF THERE IS ONE. IN ORDER TO FILE AN NOT THE FOLLOWING CONDITIONS HAVE TO BE MET:

- ALL PLANNED CONSTRUCTION ACTIVITIES HAVE CEASED AND FINAL STABILIZATION OF THE SITE HAS BEEN IMPLEMENTED.
- ALL STORM WATER DISCHARGES ASSOCIATED WITH THE CONSTRUCTION ACTIVITIES HAS CEASED.
- THE SITE IS IN COMPLIANCE WITH THE PERMIT.

DRAWING COMPLETED BY: ARON BENGOSHEA
 REVISED: 8/29/19 NEW HOUSE FLOORPLAN



309 NORTH MAIN STREET
 P.O. BOX 649
 HINESVILLE, GA 31313
 TEL: (912) 368-5212

1050 PARKSIDE COMMONS
 SUITE 101
 GREENSBORO, NC 27402
 TEL: (760) 454-0870

P.C. Simonton & Associates, Inc.
 Consulting Engineers

Chatman Homes
 Phase I Lot 1
 for
The City of Riceboro
 Riceboro
 Liberty County, Georgia

ES&PC Plan
 DATE: OCTOBER 31, 2018
 FILE NO: 2018-48PRJ
 SHEET: 2